

### Finishes

- M1** POLYTEC ELEMENTAL GREY  
16mm Pre Finished Board W\_matching 1mm ABS Edge
- M2** POLYTEC CINDER MATT  
33mm Laminated Benchtop

### Hardware

- H1 - Blum 110° Inserta Hinges W\_Blumotion
- H2 - ----
- H3 - ----
- H4 - ----

### Electrical

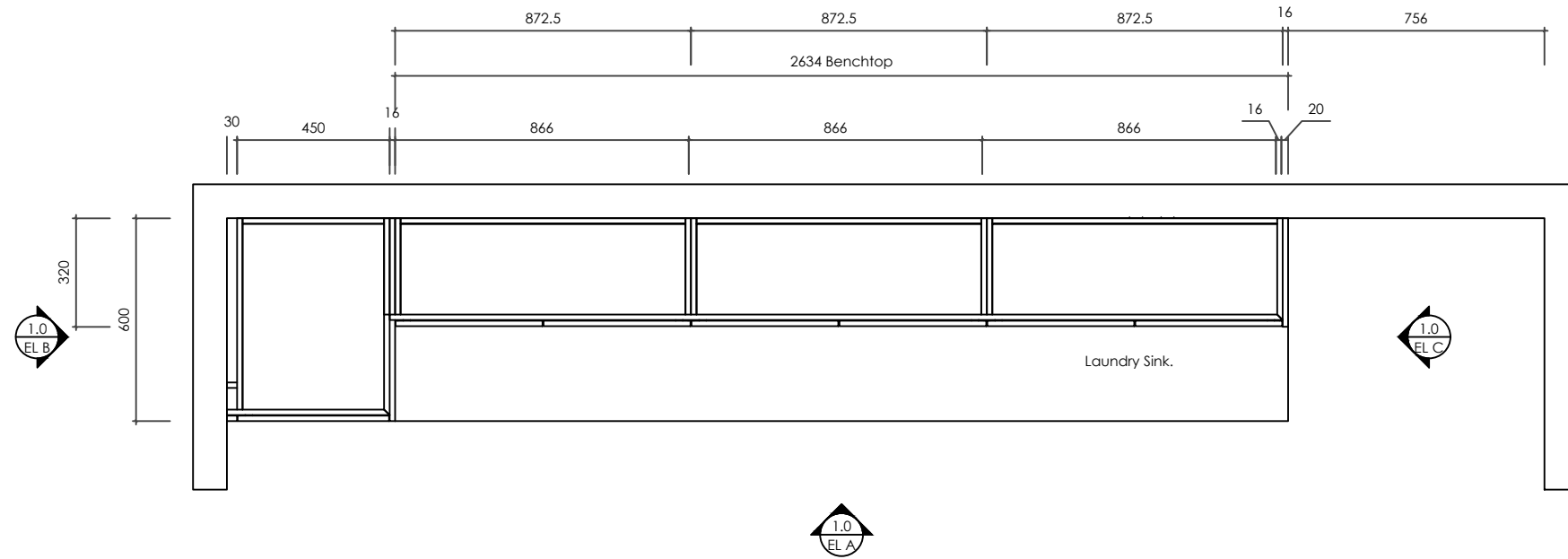
- E1 - ----
- E2 - ----

### Branding

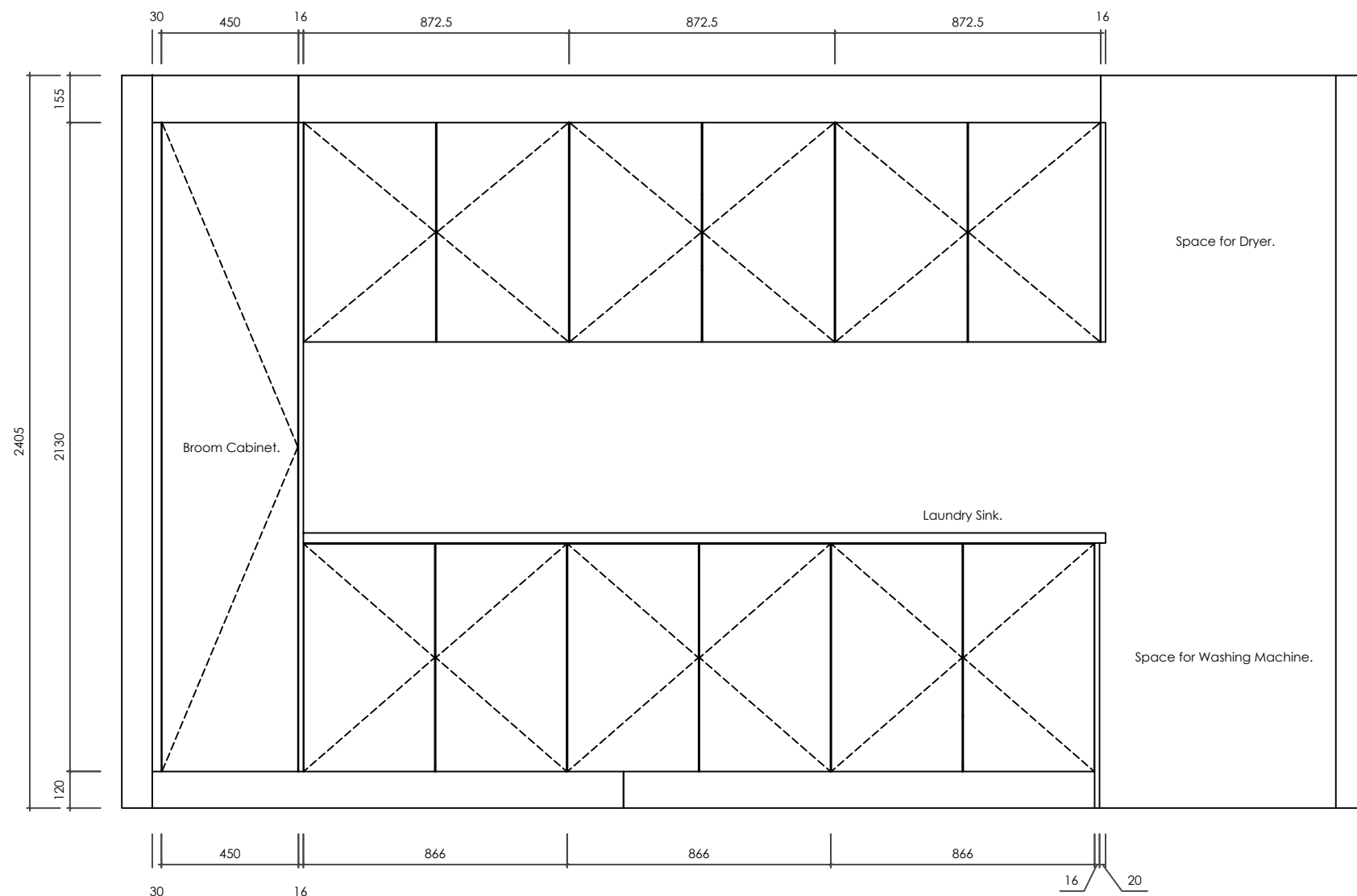
- B1 - ----
- B2 - ----

### Notes

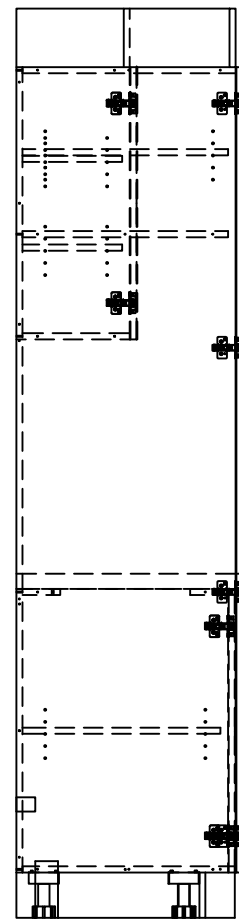
----



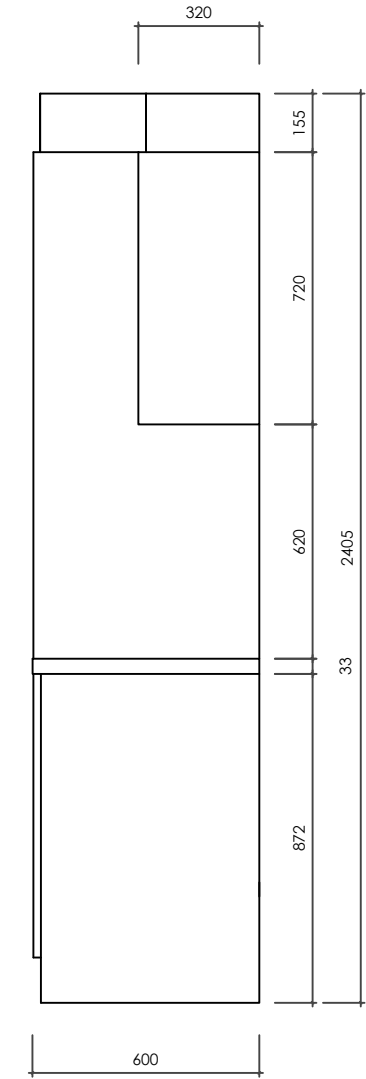
1.0 Plan View



1.0 Elevation A



1.0 Elevation B



1.0 Elevation C

### Finishes

- M1 - POLYTEC ELEMENTAL GREY - 16mm Pre Finished Board W\_matching 1mm ABS Edge
- M2 - POLYTEC CINDER MATT - 33mm Laminated Benchtop

### Hardware

- H1 - Blum 110° Inseta Hinges W\_Blumotion
- H2 - ----
- H3 - ----
- H4 - ----

### Electrical

- E1 - ----
- E2 - ----

### Branding

- B1 - ----
- B2 - ----

### Notes

---

## Finishes

- M1** POLYTEC ELEMENTAL GREY  
16mm Pre Finished Board W\_matching 1mm ABS Edge
- M2** POLYTEC CINDER MATT  
33mm Laminated Benchttop

## Hardware

- H1 - Blum 110° Inserta Hinges W\_Blumotion
- H2 - ----
- H3 - ----
- H4 - ----

## Electrical

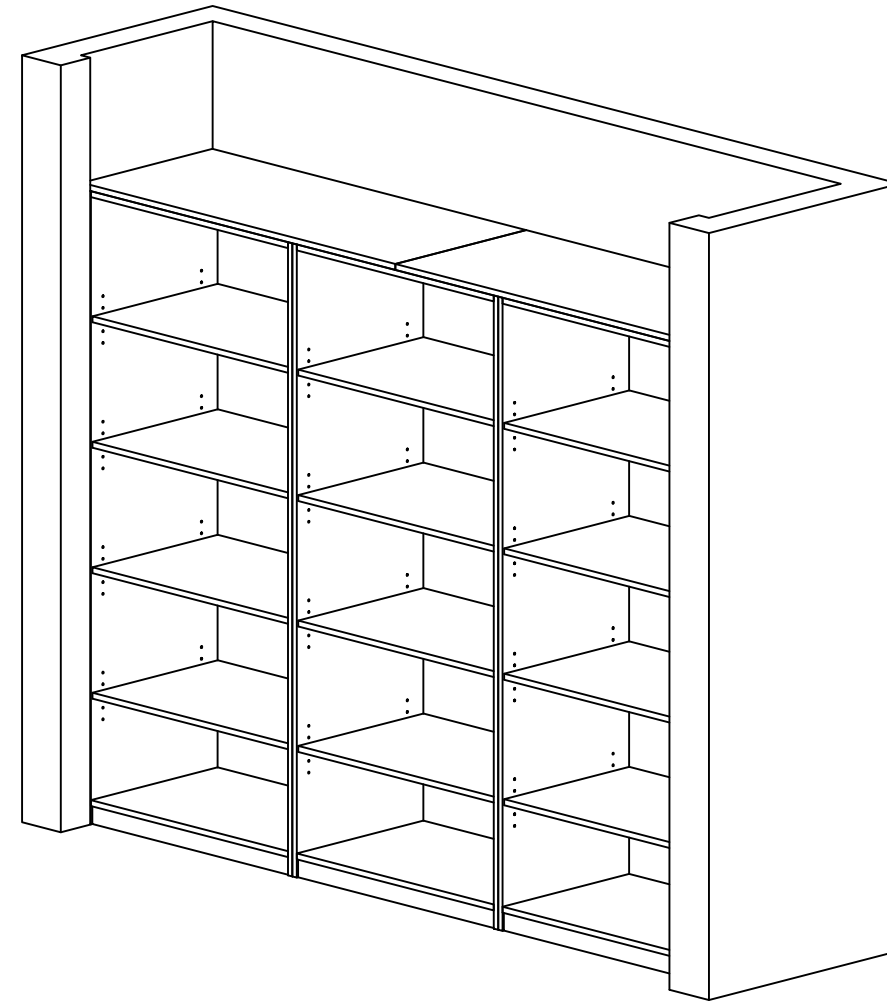
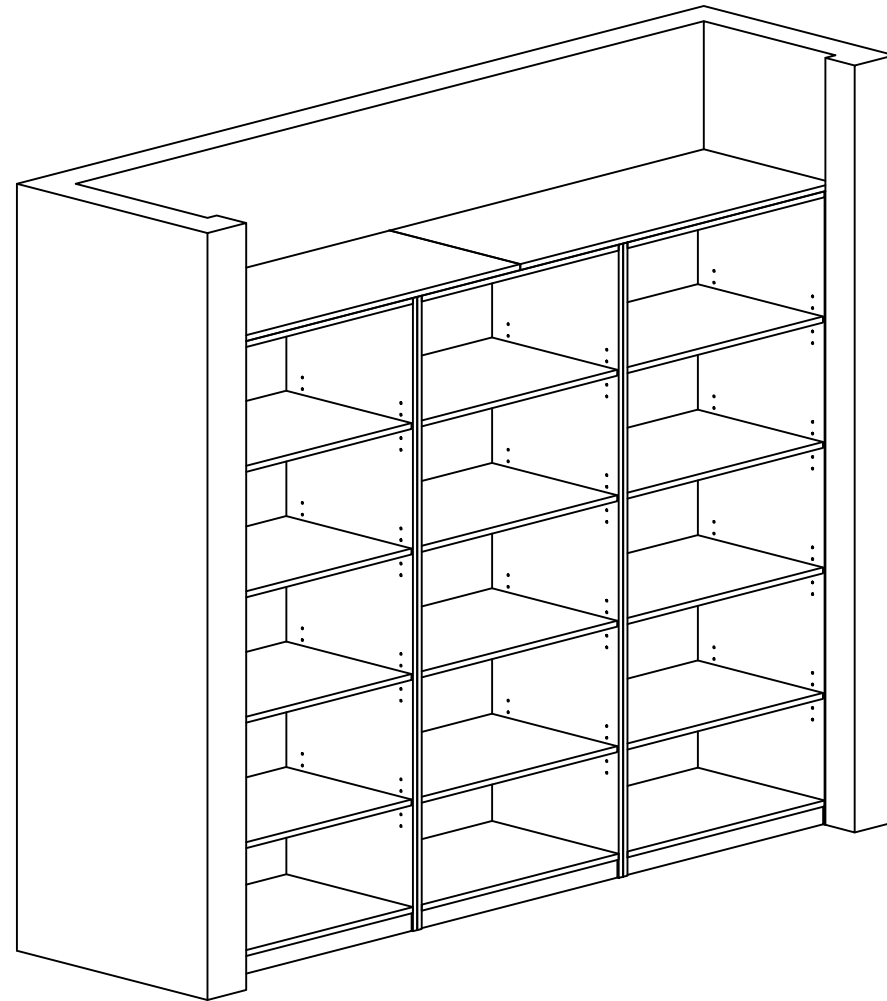
- E1 - ----
- E2 - ----

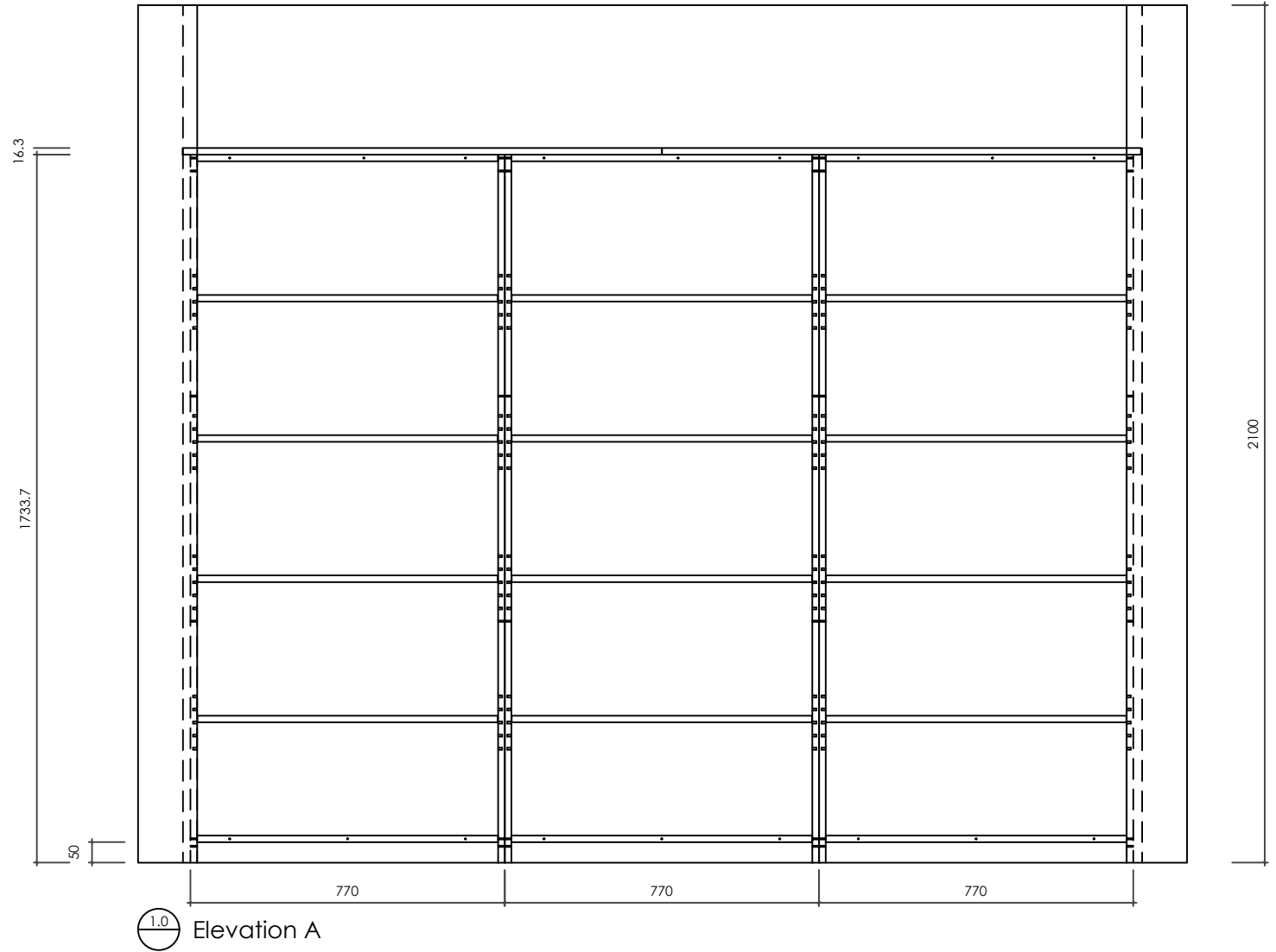
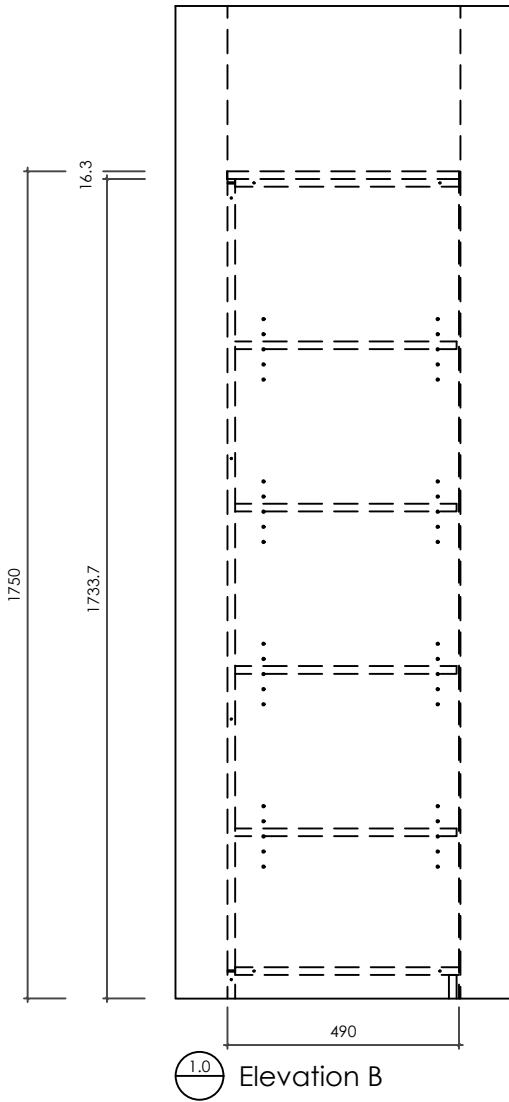
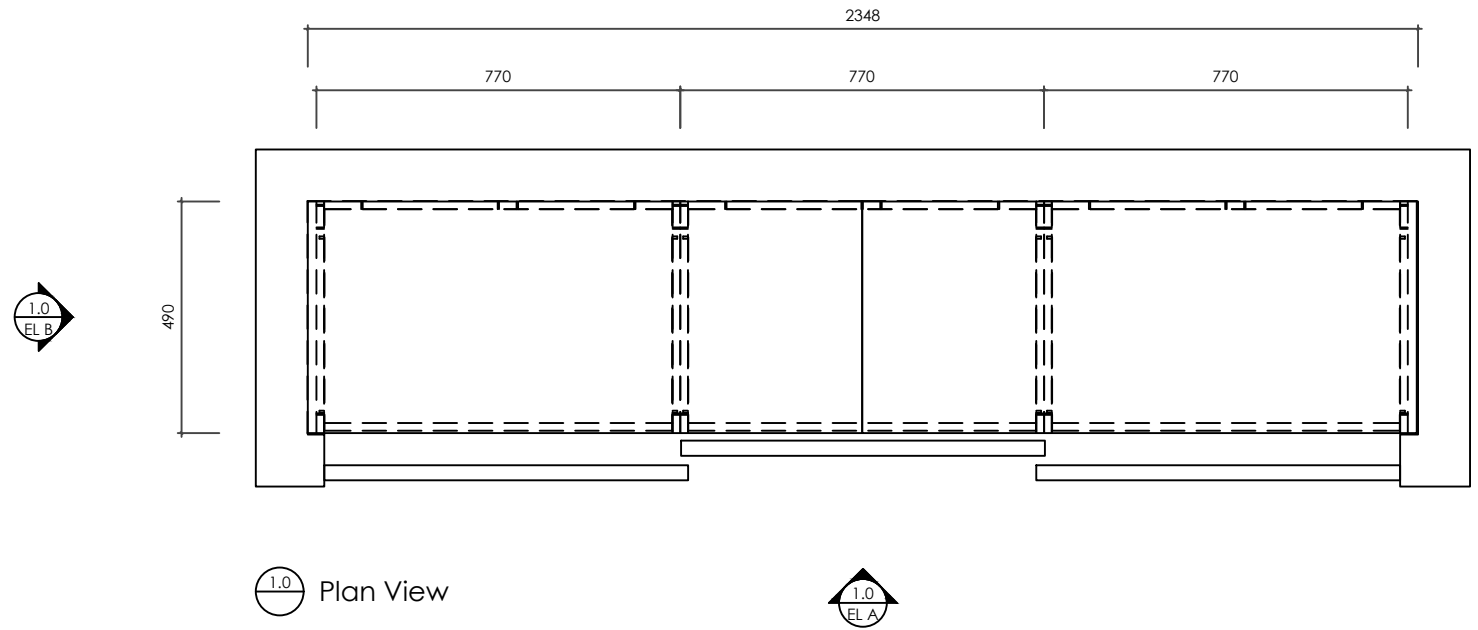
## Branding

- B1 - ----
- B2 - ----

## Notes

----





### Finishes

- M1 - POLYTEC ELEMENTAL GREY -  
16mm Pre Finished Board W\_matching  
1mm ABS Edge
- M2 - POLYTEC CINDER MATT - 33mm  
Laminated Benchtop

### Hardware

- H1 - Blum 110° Inseta Hinges  
W\_Blumotion
- H2 - ----
- H3 - ----
- H4 - ----

### Electrical

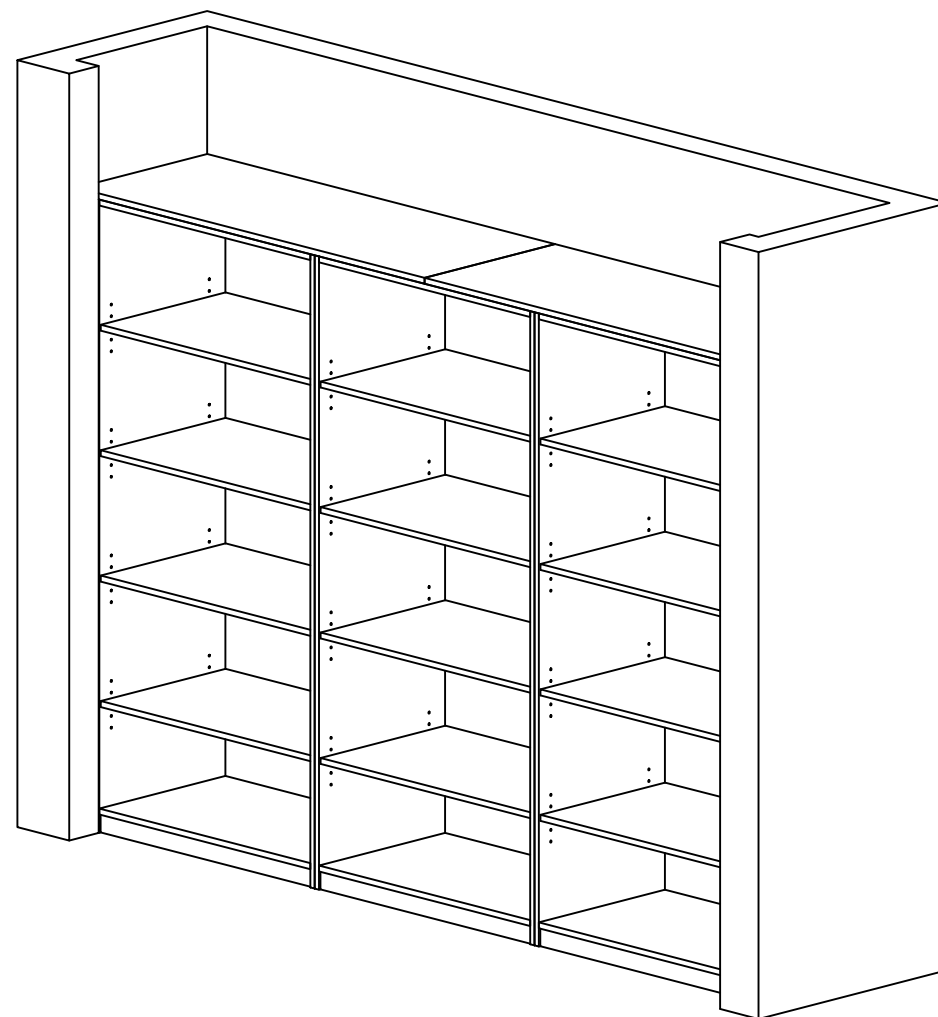
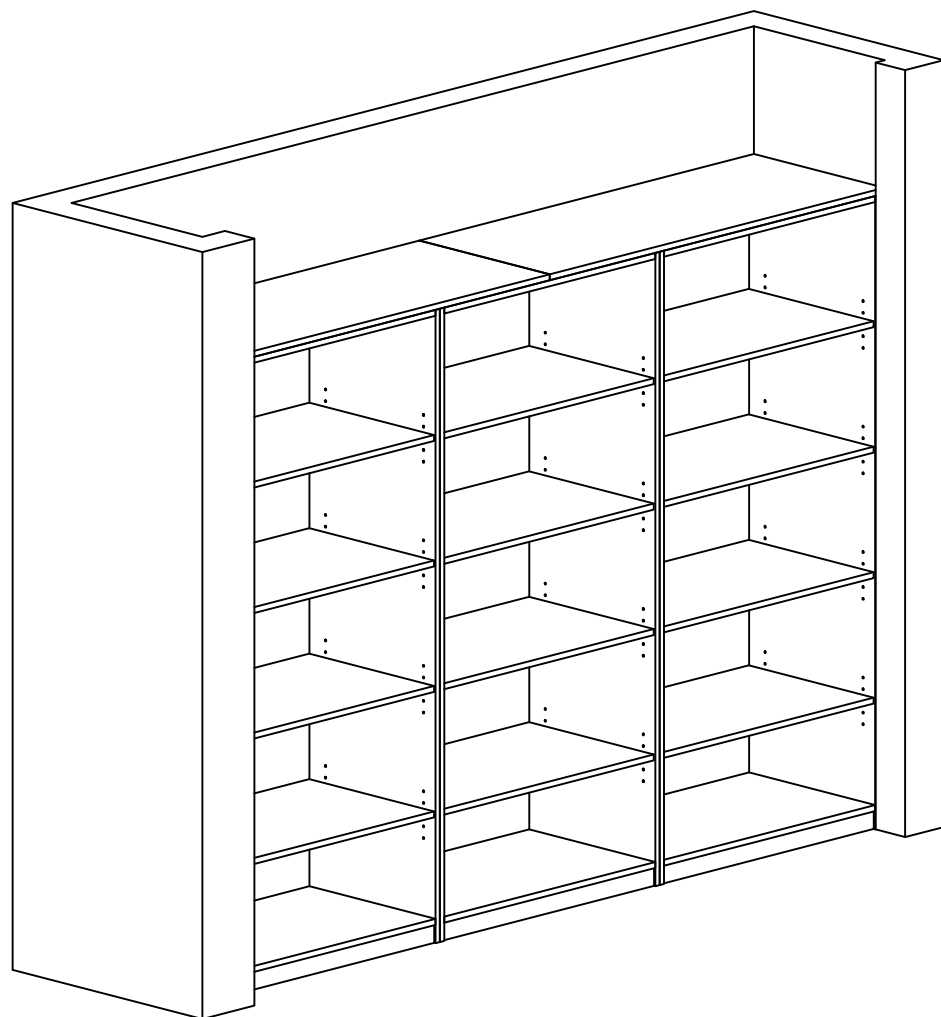
- E1 - ----
- E2 - ----

### Branding

- B1 - ----
- B2 - ----

### Notes

---



### Finishes

- M1** POLYTEC ELEMENTAL GREY  
 16mm Pre Finished Board W\_matching 1mm ABS Edge
- M2** POLYTEC CINDER MATT  
 33mm Laminated Benchtop

### Hardware

- H1 - Blum 110° Inserta Hinges W\_Blumotion
- H2 - ----
- H3 - ----
- H4 - ----

### Electrical

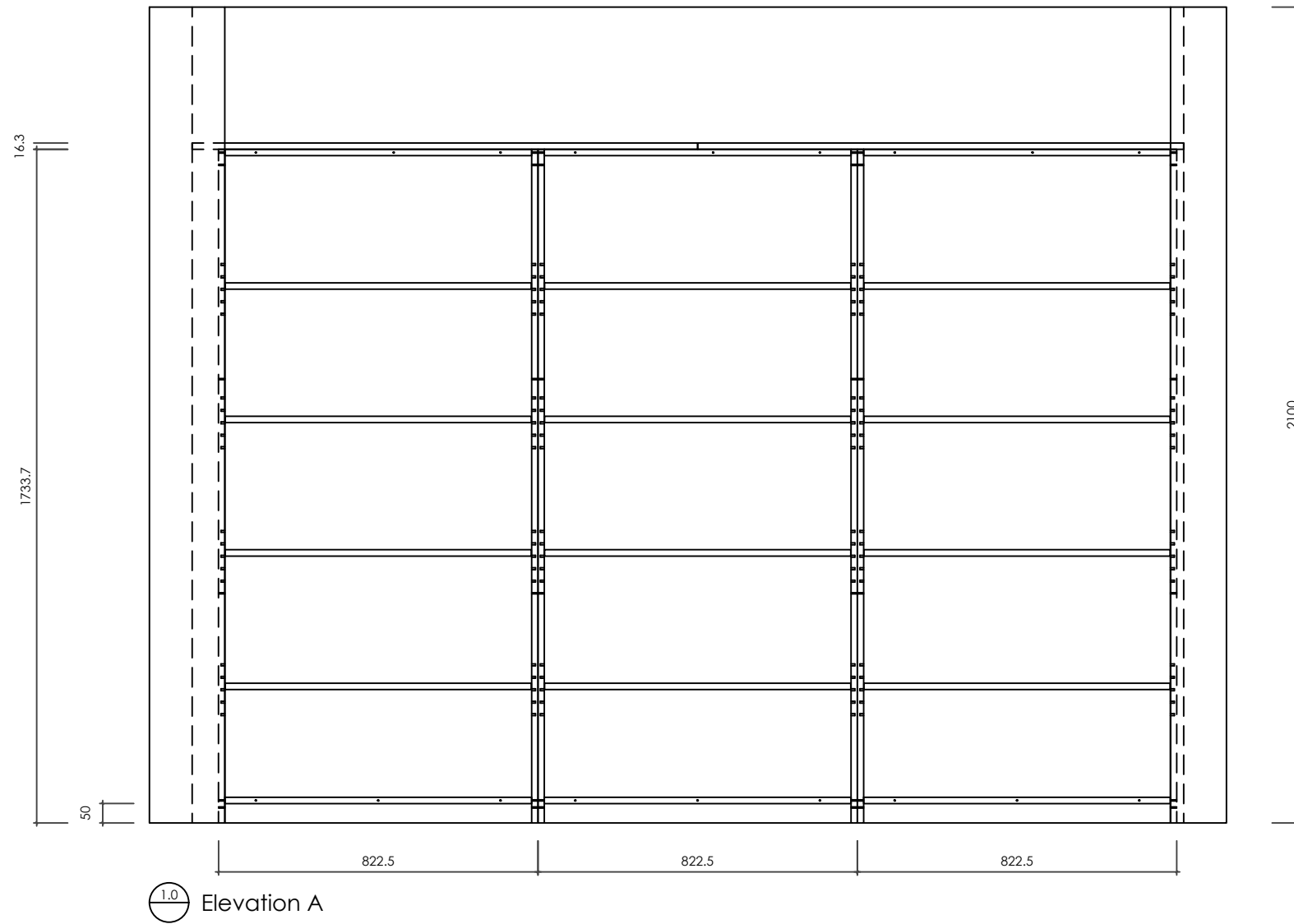
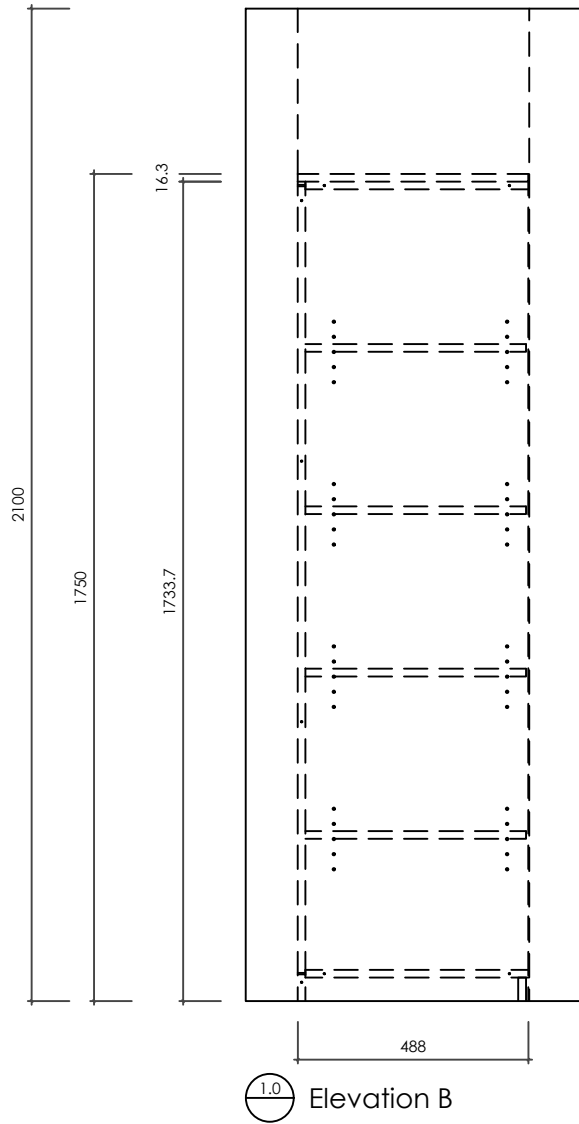
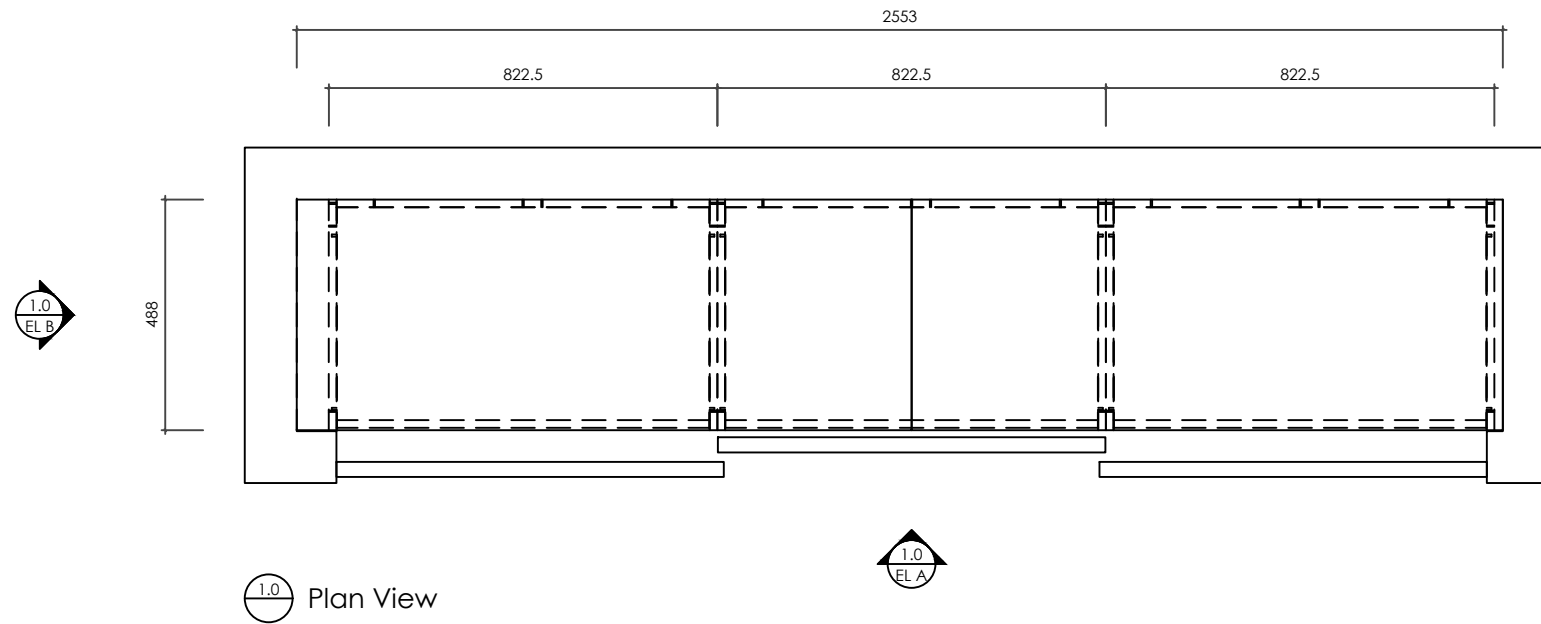
- E1 - ----
- E2 - ----

### Branding

- B1 - ----
- B2 - ----

### Notes

----



### Finishes

- M1 - POLYTEC ELEMENTAL GREY - 16mm Pre Finished Board W\_matching 1mm ABS Edge
- M2 - POLYTEC CINDER MATT - 33mm Laminated Benchtop

### Hardware

- H1 - Blum 110° Inseta Hinges W\_Blumotion
- H2 - ----
- H3 - ----
- H4 - ----

### Electrical

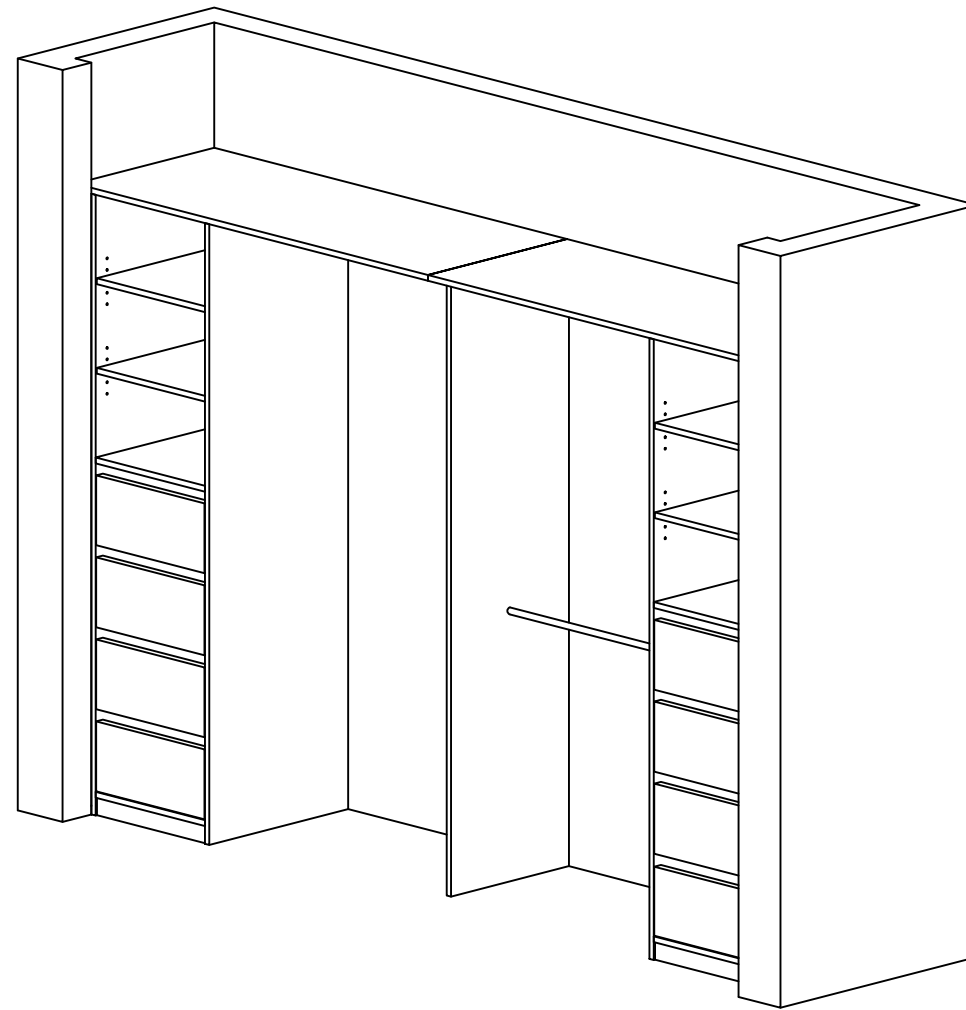
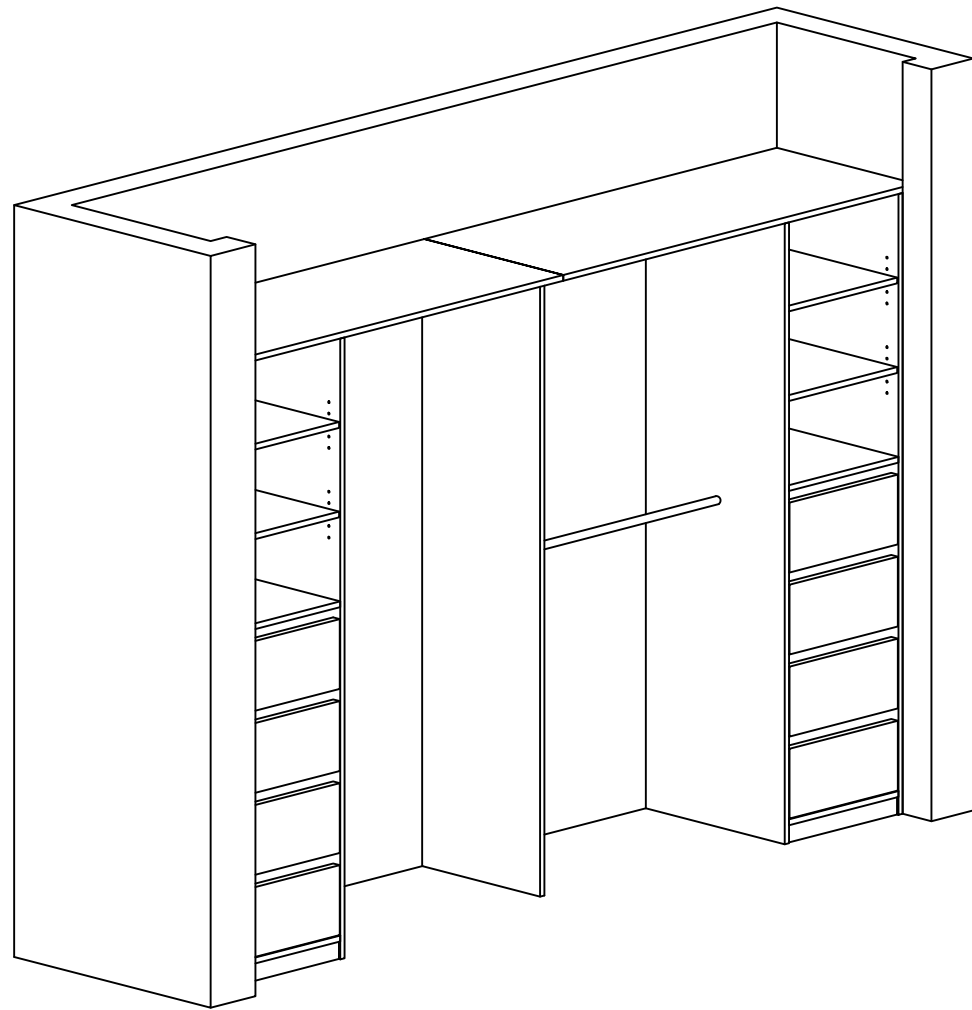
- E1 - ----
- E2 - ----

### Branding

- B1 - ----
- B2 - ----

### Notes

---



### Finishes

- M1** POLYTEC ELEMENTAL GREY  
16mm Pre Finished Board W\_matching 1mm ABS Edge
- M2** POLYTEC CINDER MATT  
33mm Laminated Benchttop

### Hardware

- H1 - Blum 110° Inserta Hinges W\_Blumotion
- H2 - ----
- H3 - ----
- H4 - ----

### Electrical

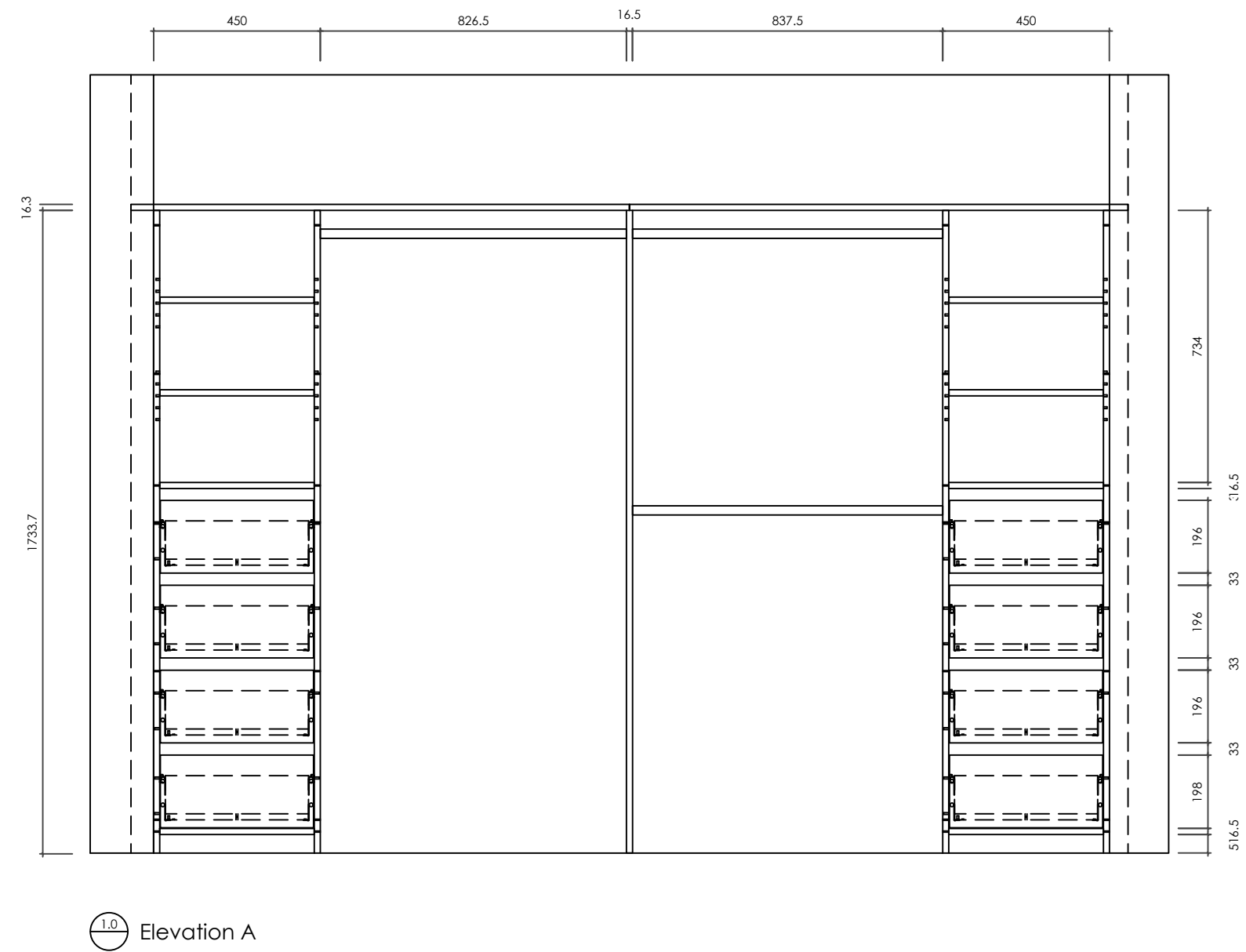
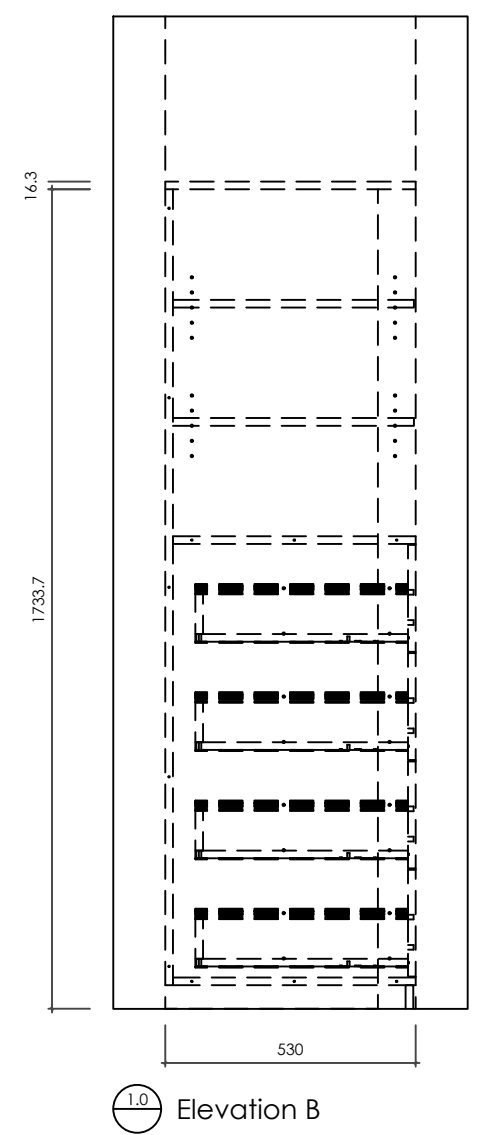
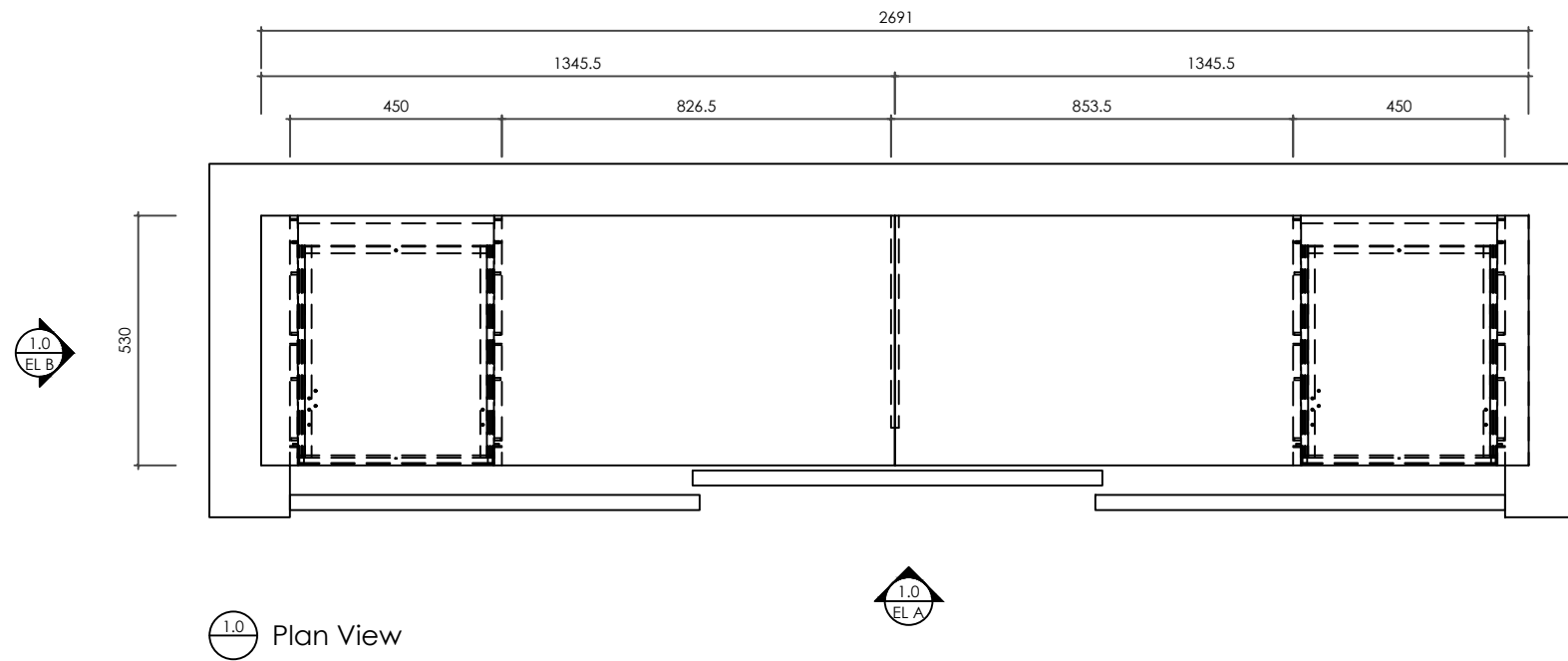
- E1 - ----
- E2 - ----

### Branding

- B1 - ----
- B2 - ----

### Notes

----



### Finishes

M1 - POLYTEC ELEMENTAL GREY - 16mm Pre Finished Board W\_matching 1mm ABS Edge

M2 - POLYTEC CINDER MATT - 33mm Laminated Benchtop

-----

-----

-----

-----

### Hardware

H1 - Blum 110° Inseta Hinges W\_Blumotion

H2 - ----

H3 - ----

H4 - ----

### Electrical

E1 - ----

E2 - ----

### Branding

B1 - ----

B2 - ----

### Notes

---

DATE: 07/03/24	JOB TITLE: Potton Ave - Rear Unit Cabinetry	NOTES: All dimensions in millimeters unless otherwise stated.  Do not scale off drawings. Use dimensions shown. Confirm all dimensions onsite prior to install.  Confirm all appliances and mounting dimensions. Appliances mounted as per available manufacturer guidelines and relevant conventions.
DESIGN NO. ----	DRAWING: Rear Master Wardrobe Elevation	
DRAWN: BA	REVISION: 1.0	