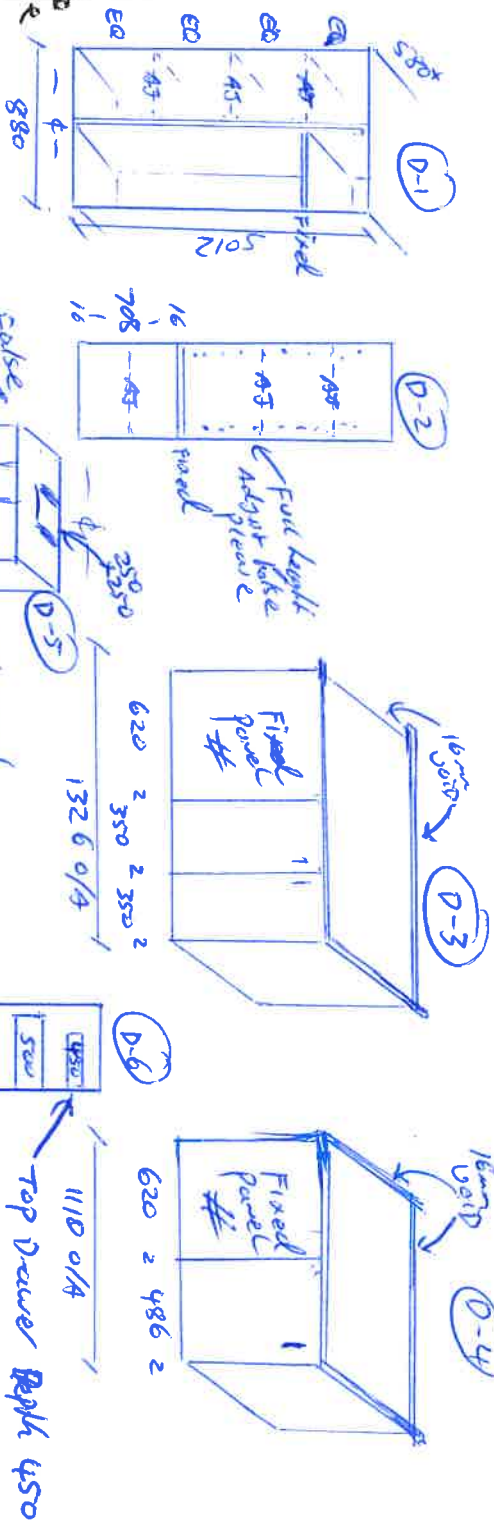


P-1 of 3

ORDER FORM

SJ Custom Kitchens

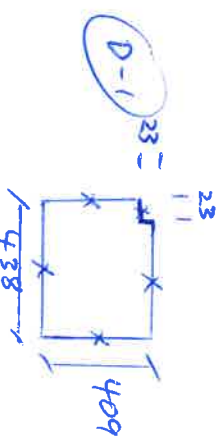
Order Ref #	Frankston
Date Ordered:	26/6/24
Date Required:	
Carcass:	16mm white
Colour Board:	18mm polytec classic white
Edge Type:	1mm texture



QTY	CABINET	HEIGHT PLUS KICKER	WIDTH	DEPTH + DOOR	NOTES
1	2 Door sink Cab	740	624	550	X1 Adjust shelf Doors = 737X 309
1	1 False Door Base Cab	740	450	550	no shelf no Drilling Door 737X 446
1	2 Door o/H Cab	447	700	380	X1 Adjust shelf Doors = 467 X 346
1	2 Door Tall Cab	2105	880	580	X3 Adjust & 1 Fixed Doors = 2105 X 436
2	open shelf wall cabinet	780	583	300	X2 Adjust shelf Full height holes
1	3 EQUAL Drawer base Cab	640	350	450	3/210.5/3/210.5/3/210.5 X 345
1	2 Door Tall Cab (party)	2105	800	580	X1 Fixed X3 Adjust shelf Doors = 2105 X 396
1	2 Door o/H Cab	355	1000	380	X1 Adjust shelf Doors = 375 X 496.5
2	2 Door o/H Cabs	605	756	300	X2 Adjust shelf Doors = 625 X 375
1	open wall Cab (m/w) Cab	386	600	418	no shelf seen on base - edge Base
1	1 Door base Cab L-Handle	740	475	550	X1 Adjust shelf Door = 737 X 472
1	1 False Door Base Cab - (fin)	740	450	550	no shelf no Drilling Door = 737 X 446
1	2 Door base Blind cur sink Cab	740	1326	550	X1 Adjust shelf Doors = 737 X 350
1	1 Door base Blind cur Cab	740	1110	550	X1 Adjust shelf Door L-Handle - 737 X 486
2	2 Door o/H Cab	605	945	380	X2 Adjust shelf Doors = 625 X 470
1	2 Door R/HOOD Cab (False Bar)	605	600	380	no shelf solid Base = Doors = 625 X 298
1	2 Door o/H Cab	605	858	380	X2 Adjust shelf Doors = 625 X 426
1	3 Drawer base Cab	740	828	550	3/182/3/274.5/3/274.5 X 826
1	3 Drawer base Cab	740	828	550	3/182/3/274.5/3/274.5 X 826
1	600mm w/B/O Base Cab	740	600	550	3/68.5/600/68.5 X 596

Handwritten notes and circled letters (K, L, M, N, O, P, Q, R, S, T, U, V, W, X, Y, Z) are present at the bottom of the table, likely indicating specific details or materials for each unit.

FILLERS/PANEL LIST



QTY	HEIGHT	WIDTH	EDGE	NOTES
1	870	575	1L	L- END PANEL Laundry (K)
1	740	150	2L 1S	R-wall Filter Base Cab (L)
1	740	35	N/E	R-wall Filter Base Cab (L)
1	130	1127	N/E	Kicker (L)
2	2235	600	2L 1S	LTR side w/ply/Dryer stacks (L)
1	700	600	2L	Dryer base panel (L)
1	2235	35	N/E	Dryer top wall filter (L)
1	2105	35	N/E	Tall cab wall filter (L)
1	2105	150	2L 1S	Tall cab wall panel (L)
1	130	933	N/E	Kicker Tall cab (L)
2	770	475	1L	Pests Drawers LTR-panels (K)
1	130	351	N/E	Kicker (K)
1	800	325	1L 2S	off open shelf side panel (L)
2	2235	600	2L 1S	LTR = Fridge still panels (L)
1	2235	605	1L 1S	L side pantry panel (L)
1	130	801	N/E	Kicker pantry (L)
D-1	409	438	2L 2S	N/W R-side panel (L)
2	23	601	N/E	n/w top Filter/Spacer (K)
1	625	320	1L 2S	off wall panel n/w side (L)
1	605	35	N/E	off wall filter (L)
1	300	35	N/E	off wall filter (L)
1	740	570	2L 1S	Bin R-side panel (L)
4	740	50	2S	Blindnr Filters (L)
2	740	620	2L 2S	Blind nr panels (L)
2	870	570	2L	LTR Ply panels (L)
1	130	1150	N/E	Kicker Bin (L)
1	130	900	N/E	Kicker Sink (L)
1	130	250	N/E	Kicker R-side of Ply-Blindnr (L)
1	130	2259	N/E	Kicker C/R/D - Joining (L)
1	130	800	N/E	Kicker C/R/D - Joining (L)
1	870	580	1L	Base END panel (L)
1	625	425	1L 2S	O/N END panel R-side (L)

