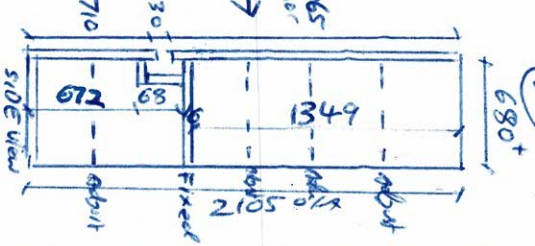
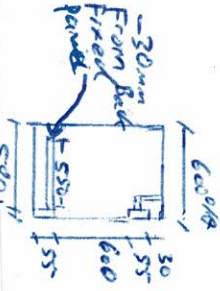
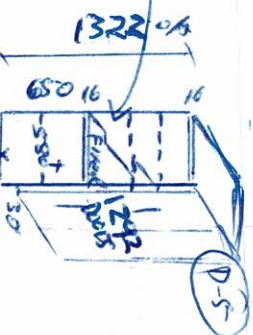
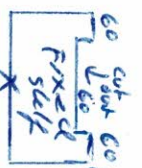
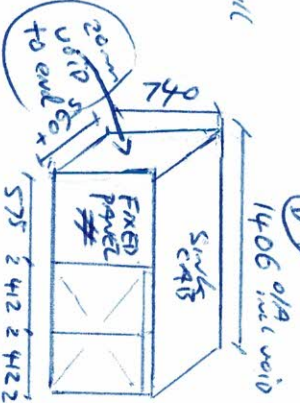
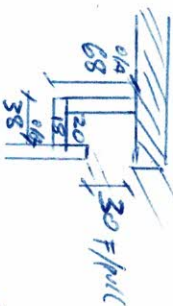


# ORDER FORM



SI Custom Kitchens

Order Ref #: **Bridge**

Date Ordered: **10/10/24**

Date Required: **Carcass 1st**

Carcass: **16mm white mel**

Colour Board: **18mm classic white mel**

Edge Type: **lmm.**

\* Recessed finger pull to all base cab & Blum Merivo box

QTY	CABINET	HEIGHT PLUS KICKER	WIDTH	DEPTH + DOOR	NOTES
1	3 Drawer base cab	740	784	560	30/180/30/235/30/235 X 779
1	2 Door Blind cur (Sink) cab	740	1406	560	X1 Adjust shelf Doors = 710 X 412
1	1 False Door s/Pack cab	740	300	580	No shelf no Drilling - Door = 710 X 298
1	900 w/180 cab	740	900	580	30/55/600/55 X 895
1	2 EQUAL Drawer cab	740	444	580	30/340/30/340 X 442
1	2 Door Tall Blind cur cab (H-Mel)	2105	1145	680	X4 Adjust shelf X1 Fixed Doors = 1365-30/710 X 490
1	2 Door wall appliance cab	1322	694	580	No Base to cab X1 Fixed shelf X2 Adjust Doors = 292 X 343
1	3 Drawer base cab	740	694	650	30/180/30/235/30/235 X 689
1	2 Door off/1 cab (Bridge)	385	752	480	X1 Adjust shelf Doors = 405 X 372

FILLERS/PANEL LIST

Polytec 18mm classic white matt

QTY	HEIGHT	WIDTH	EDGE	NOTES
1	405	700	15 2L	Fridge O/H End Panel
1	385	35	N/E	O/H Fridge Filler
1	680	35	N/E	O/H Fridge Filler
1	2235	705	1L 1S	L-side Fridge panel
1	2105	700	1L 2S	L-side Appliance panel
1	2105	650	2L 2S	Blind cup panel
1	130	1450	N/E	Kitchen Appliance Cab
4	110	700	2L	F/Panels Appliance
2	110	800	2L	Panby F/Panels
1	740	600	2L 1S	R-side panel 2 Drawer cab
2	740	30	N/E	" "
1	740	630	2L 1S	Blind cup 40" cab panel
2	740	30	2S	D/W R-side Filler + Blind cup
2	870	580	2L	L+R-Panel D/W
2	110	1760	2L	F/Panels v/D/O top panel
1	130	1760	N/E	Kitchen
1	110	442	2L	F/Panels Drawers x2 Drawer cab
1	130	1020	N/E	Sink Kitchen
2	110	1020	2L	Sink F/Panels
1	740	630	1L 2S	Sink Blind cup panel
2	740	30	2S	Sink + Drawer cup Filler
1	740	580	2L 1S	ISLAND Drawers R-cup Filler panel
1	870	582	2L	ISLAND END PANEL
4	110	790	2L	ISLAND Drawers F/Panels
1	130	1000	N/E	ISLAND Kitchen
1	870	990	2S	ISLAND FACE PANEL



