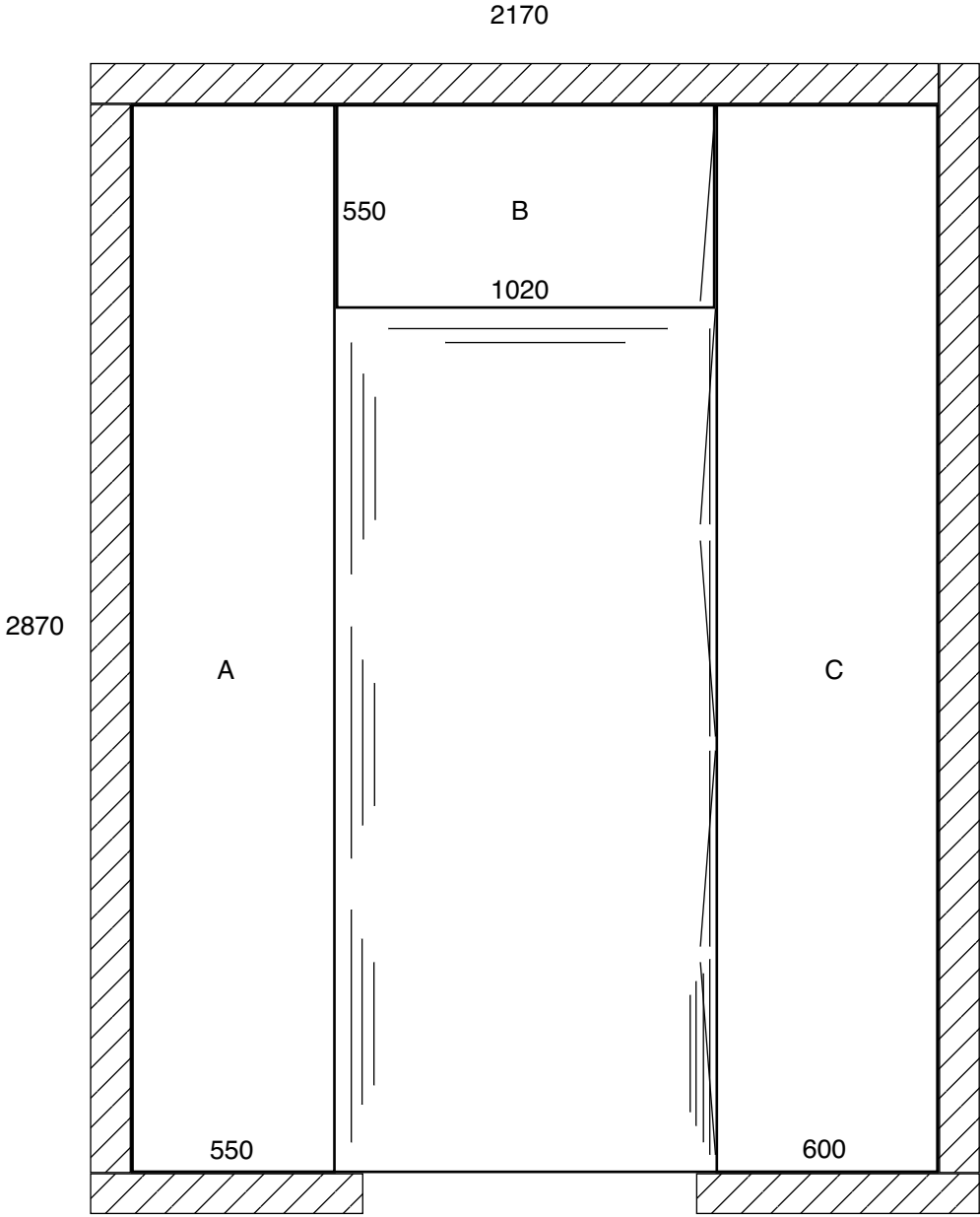


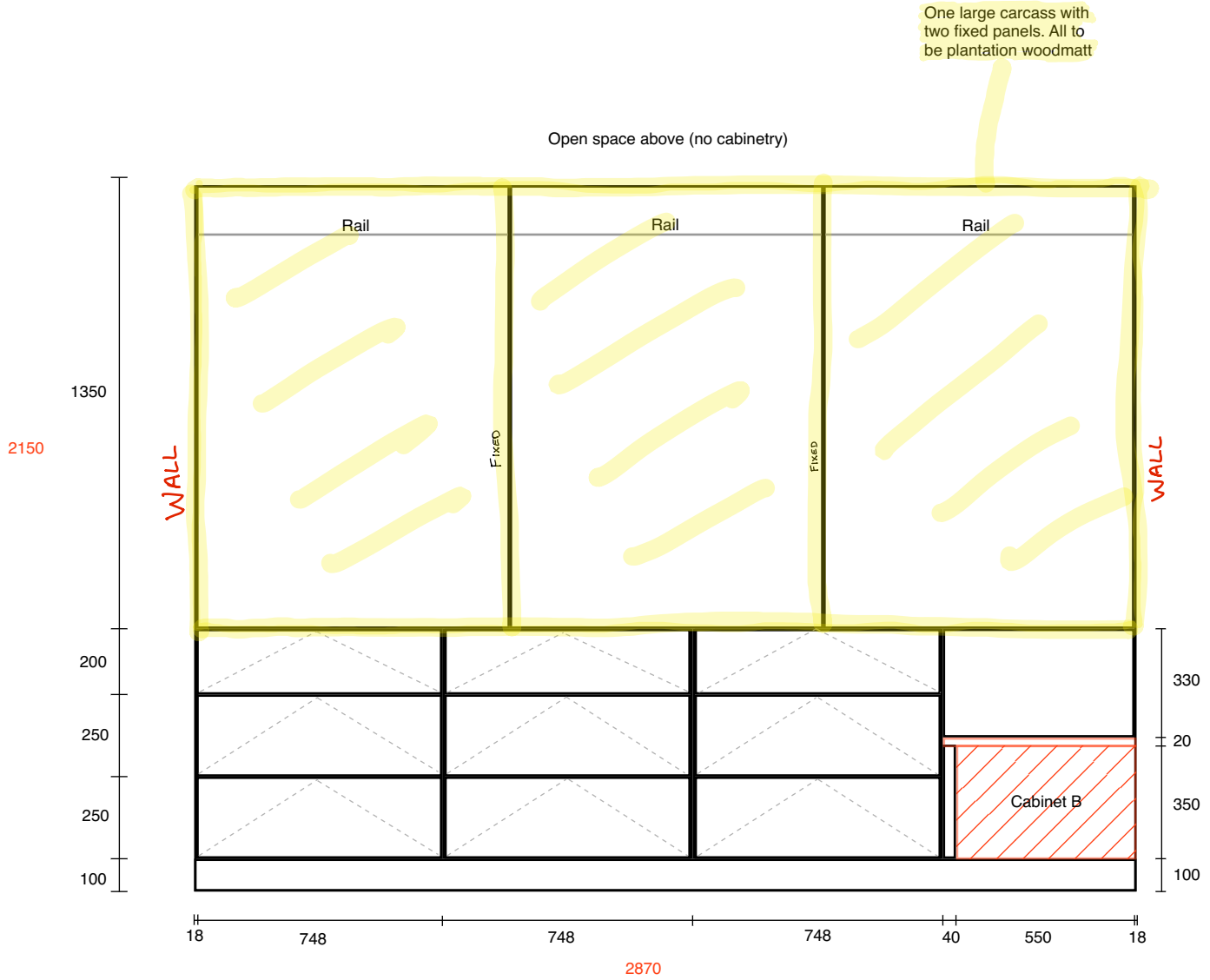
Master WIR



CABINET INTERNALS:
16MM WHITE MELAMINE-1MM
EDGING

DOORS AND PANELS:
18MM MDF PLANTATION ASH
WOODMATT

Master WIR (A)
Depth 550mm

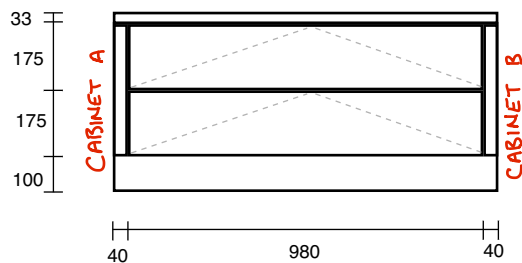


Master WIR (B)
Depth 550mm

CABINET INTERNALS:
16MM WHITE MELAMINE-1MM
EDGING

DOORS AND PANELS:
18MM MDF PLANTATION ASH
WOODMATT

BENCHTOP:
33MM - MATERA WHITE
CEMENT



Master WIR (C)
Depth 600mm

CABINET INTERNALS:
16MM WHITE MELAMINE-1MM
EDGING
DOORS AND PANELS:
18MM MDF PLANTATION ASH
WOODMATT

Open spaces, fully built out
of plantation woodmatt

