

# JOB #486545

JOB NAME: Tv unit

SUBMITTED: -



## PROPERTY LIST

### JOB BELONGING TO:

Pascal Antoun (Pac Build Victoria Pty Ltd)  
Pacbuild01@gmail.com

### DELIVERED TO:

20 graduate crescent  
Wheelers hill VIC 3150  
Australia

### PHONE:

0411216602

### JOB DESCRIPTION:

-

### ROOM NUMBER:

1

### ROOM NAME:

Room 1

### ROOM DESCRIPTION:

-

### COMPANY LABEL:

Pascal Antoun (Pac Build Victoria Pty Ltd) 0411216602

## PRODUCT 1-1.00

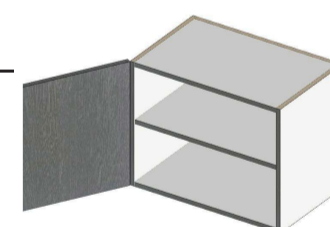
## UPPER - LEFT DOOR

### SPECS:

QUANTITY	HEIGHT	WIDTH	DEPTH
3	500	620	400

### HARDWARE:

PRODUCT SUPPLY	SUPPLY HARDWARE
Flat Pack	Yes



### EXTERIOR:

#### MATERIAL

Polytec Createc MRMDF 18.5 Black  
Wenge

#### EDGING

Polytec Createc 1 Black Wenge



### INTERIOR:

#### MATERIAL

ShopMaterials Available HMRPB 16.5 White  
Carcase

#### EDGING

Polytec Createc 1 Black Wenge

---

**DOOR:**

STYLE	AMOUNT	HINGE QUANTITY PER DOOR	HINGE SERIES	HANG
Flat Panel	1	H2	Blum Inserta	Left

---

**SHELVES:**

SHELVES	PART SET BACK
A0.5	A5

---

**CLEARANCE:**

TOP	BOTTOM	LEFT	RIGHT
0	0	1.7	1.7

---

**PRODUCT 1-2.00****UPPER - APPLIED PANEL**

---

**SPECS:**

QUANTITY	HEIGHT	DEPTH	STYLE
<b>1</b>	<b>500</b>	<b>420</b>	<b>Flat Panel</b>

---

**EXTERIOR:****MATERIAL**

Polytec Createc MRMDF 18.5 Black Wenge

**EDGING**

Polytec Createc 1 Black Wenge



---

**EDGE:**

FRONT	BACK	TOP	BOTTOM
Yes	Yes	Yes	Yes

**PRODUCT 1-3.00**

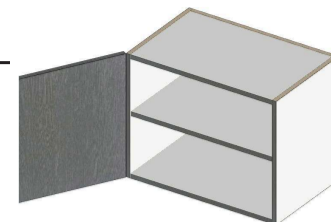
**UPPER - LEFT DOOR**

**SPECS:**

QUANTITY	HEIGHT	WIDTH	DEPTH
<b>1</b>	<b>500</b>	<b>620</b>	<b>400</b>

**HARDWARE:**

PRODUCT SUPPLY	SUPPLY HARDWARE
Flat Pack	Yes



**EXTERIOR:**

MATERIAL	EDGING
Polytec Createc MRMDF 18.5 Black Wenge	Polytec Createc 1 Black Wenge



**INTERIOR:**

MATERIAL	EDGING
ShopMaterials Available HMRPB 16.5 White Carcase	Polytec Createc 1 Black Wenge

**DOOR:**



STYLE	AMOUNT	HINGE QUANTITY PER DOOR	HINGE SERIES	HANG
Flat Panel	1	H2	Blum Inserta	Left

**SHELVES:**

SHELVES	PART SET BACK
A0.5	A5

**CLEARANCE:**

TOP	BOTTOM	LEFT	RIGHT
0	0	1.7	1.7

**PRODUCT 1-4.00**

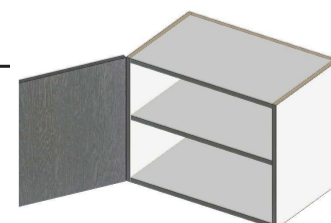
**UPPER - LEFT DOOR**

**SPECS:**

QUANTITY	HEIGHT	WIDTH	DEPTH
<b>1</b>	<b>500</b>	<b>620</b>	<b>400</b>

**HARDWARE:**

PRODUCT SUPPLY	SUPPLY HARDWARE
Flat Pack	Yes



**EXTERIOR:**

MATERIAL	EDGING
Polytec Createc MRMDF 18.5 Black Wenge	Polytec Createc 1 Black Wenge



---

**INTERIOR:****MATERIAL**

ShopMaterials Available HMRPB 16.5 White  
Carcase

**EDGING**

Polytec Createc 1 Black Wenge

---

**DOOR:**

STYLE	AMOUNT	HINGE QUANTITY PER DOOR	HINGE SERIES	HANG
Flat Panel	1	H2	Blum Inserta	Left

---

**SHELVES:****SHELVES PART SET BACK**

A0.5 A5

---

**CLEARANCE:**

TOP	BOTTOM	LEFT	RIGHT
0	0	1.7	1.7

---

**PRODUCT 1-5.00****UPPER - FILLER**

---

**SPECS:**

QUANTITY	HEIGHT	WIDTH	DEPTH	STYLE
<b>1</b>	<b>500</b>	<b>70</b>	<b>420</b>	<b>Flat Panel</b>

---

**HARDWARE:****PRODUCT SUPPLY**

Flat Pack

**EXTERIOR:****MATERIAL**

Polytec Createc MRMDF 18.5 Black  
Wenge

**EDGING**

Polytec Createc 1 Black Wenge

**INTERIOR:****MATERIAL**

ShopMaterials Available HMRPB 16.5 White  
Carcase

**EDGING**

ShopMaterials Available 1 White Carcase

---

**EDGE:**

FRONT	BACK	TOP	BOTTOM
Yes	Yes	Yes	Yes

## PRODUCT 1-6.00

## TALL - APPLIED PANEL

### SPECS:

QUANTITY	HEIGHT	DEPTH	FINISH AT CAB BOTTOM
1	1878	420	Yes

### STYLE

**Flat Panel**

### EXTERIOR:

#### MATERIAL

Polytec Createc MRMDF 18.5 Black Wenge

#### EDGING

Polytec Createc 1 Black Wenge



### EDGE:

FRONT	BACK	TOP	BOTTOM
Yes	Yes	Yes	Yes

## PRODUCT 1-7.00

## TALL - APPLIED PANEL

### SPECS:

QUANTITY	HEIGHT	DEPTH	FINISH AT CAB BOTTOM
1	1258	420	Yes

### STYLE

**Flat Panel**

### EXTERIOR:

#### MATERIAL

Polytec Createc MRMDF 18.5 Black Wenge

#### EDGING

Polytec Createc 1 Black Wenge



### EDGE:

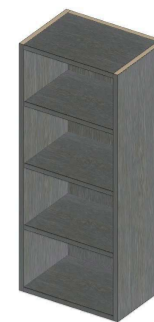
FRONT	BACK	TOP	BOTTOM
Yes	Yes	Yes	Yes

## PRODUCT 1-8.00

## UPPER - OPEN UNIT

### SPECS:

QUANTITY	HEIGHT	WIDTH	DEPTH
<b>1</b>	<b>1000</b>	<b>400</b>	<b>300</b>



### HARDWARE:

#### PRODUCT SUPPLY

Flat Pack

### EXTERIOR:

#### MATERIAL

Polytec Createc MRMDF 18.5 Black Wenge

#### EDGING

Polytec Createc 1 Black Wenge



### SHELVES:

SHELVES	PART SET BACK
A0.25;A0.5;A0.75	A5;A5;A5

## PRODUCT 1-9.00

## UPPER - APPLIED PANEL

### SPECS:

QUANTITY	HEIGHT	DEPTH	STYLE
<b>1</b>	<b>1000</b>	<b>300</b>	<b>Flat Panel</b>



### EXTERIOR:

#### MATERIAL

Polytec Createc MRMDF 18.5 Black Wenge

#### EDGING

Polytec Createc 1 Black Wenge



### EDGE:

FRONT	BACK	TOP	BOTTOM
Yes	Yes	Yes	Yes

**SPECS:**

QUANTITY	HEIGHT	WIDTH	DEPTH	STYLE
1	1000	70	320	Flat Panel

**HARDWARE:**

**PRODUCT SUPPLY**

Flat Pack



**EXTERIOR:**

**MATERIAL**

Polytec Createc MRMDF 18.5 Black Wenge

**EDGING**

Polytec Createc 1 Black Wenge



**INTERIOR:**

**MATERIAL**

ShopMaterials Available HMRPB 16.5 White Carcase

**EDGING**

Polytec Createc 1 Black Wenge

**EDGE:**

FRONT	BACK	TOP	BOTTOM
Yes	Yes	Yes	Yes

# JOB #486545

JOB NAME: Tv unit

SUBMITTED: -



---

**JOB BELONGING TO:**

Pascal Antoun (Pac Build Victoria Pty Ltd)  
Pacbuild01@gmail.com

**DELIVERED TO:**

20 graduate crescent  
Wheelers hill VIC 3150  
Australia

**PHONE:**

0411216602

---

**JOB DESCRIPTION:**

-

---

## INDEX

ITEM #	NAME	QTY	SIZE	PAGE
<a href="#">1-1</a>	<a href="#">Upper - Left Door</a>	3	500H x 620W x 400D	1
<a href="#">1-2</a>	<a href="#">Upper - Applied Panel</a>	1	500H x 420D	2
<a href="#">1-3</a>	<a href="#">Upper - Left Door</a>	1	500H x 620W x 400D	3
<a href="#">1-4</a>	<a href="#">Upper - Left Door</a>	1	500H x 620W x 400D	3
<a href="#">1-5</a>	<a href="#">Upper - Filler</a>	1	500H x 70W x 420D	4
<a href="#">1-6</a>	<a href="#">Tall - Applied Panel</a>	1	1878H x 420D	5
<a href="#">1-7</a>	<a href="#">Tall - Applied Panel</a>	1	1258H x 420D	5
<a href="#">1-8</a>	<a href="#">Upper - Open Unit</a>	1	1000H x 400W x 300D	6
<a href="#">1-9</a>	<a href="#">Upper - Applied Panel</a>	1	1000H x 300D	6
<a href="#">1-10</a>	<a href="#">Upper - Filler</a>	1	1000H x 70W x 320D	7